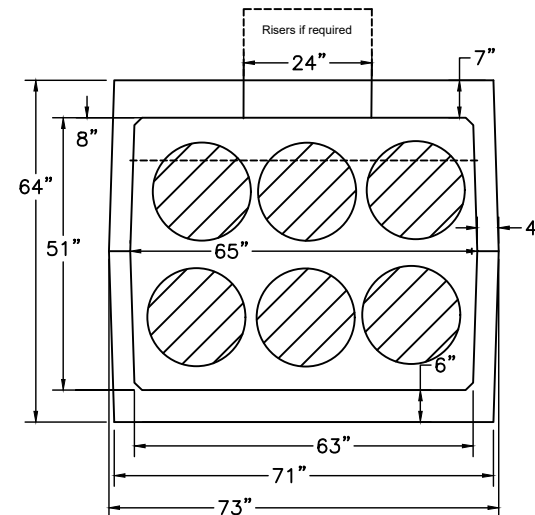
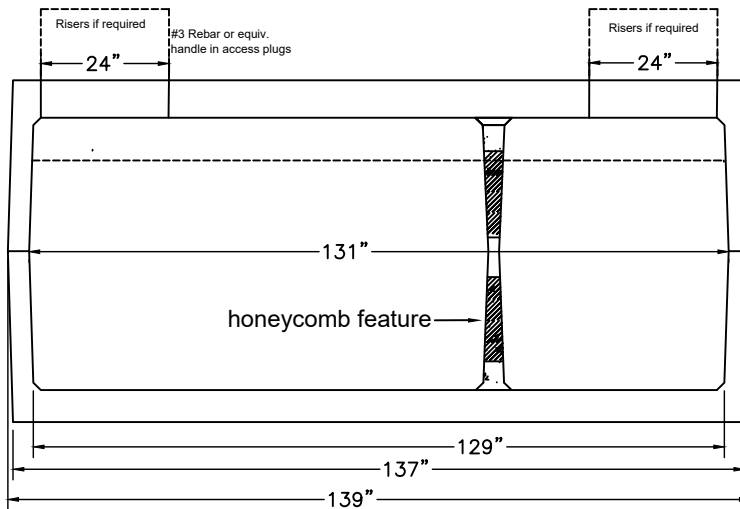


**MITCHELL CONCRETE SPECIALTIES  
1500 GALLON CAR WASH TANK  
M1500H20CW**



**Mitchell Concrete Specialties**  
499 US 31 Highway South  
Alabaster, AL 35007  
(205) 663-3652

**M1500H20CW Specifications:**  
Load Rating: H20  
Full Capacity: 1795 gallons  
Concrete: 5000 psi. minimum  
Tank Weight: 18,250 lbs.

**REINFORCING:** #4, #5 bidirectional rebar cage on top and bottom. #5 bent rebar added vertically in top and bottom walls, wrapping tank edges and tied to the top and bottom cage. Tank seam reinforced with double continuous rebar rings. All rebar is grade 60. Concrete mix reinforced with synthetic macro fiber.

H20 tanks designed in accordance with ASTM C890 and ACI 318 and require 1' minimum coverage depth.

Materials and manufacturing conform to ASTM C1227/C1613.